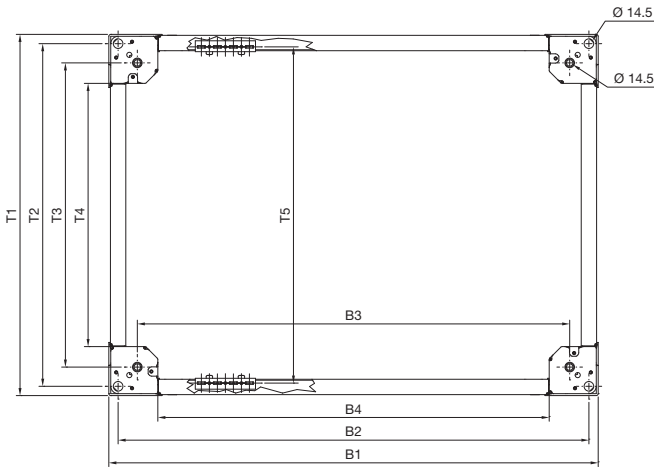


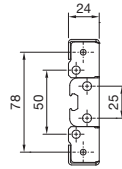
# Systemausbau

## Sockel

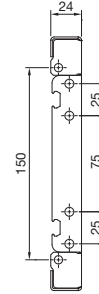
### Sockel-System VX, Edelstahl



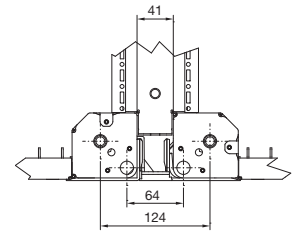
Ansicht A



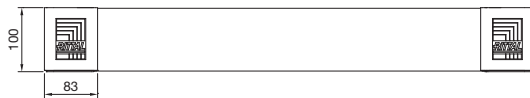
Ansicht B



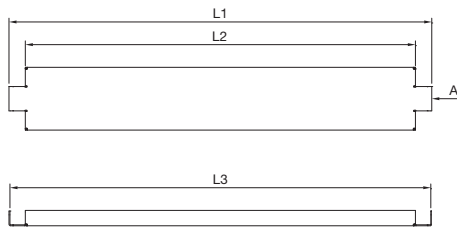
Anreihung



Sockel, 100 mm hoch



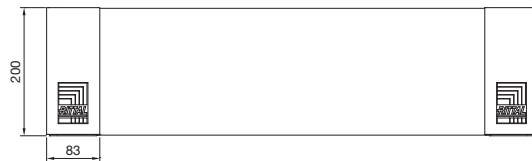
Sockel-Blenden, geschlossen, 100 mm hoch, Vorderansicht



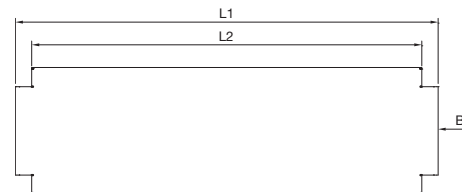
Rückansicht



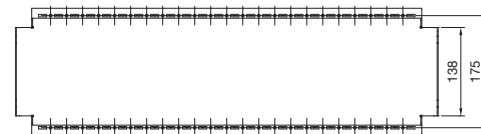
Sockel, 200 mm hoch



Sockel-Blenden, geschlossen, 200 mm hoch, Vorderansicht



Rückansicht



Für Schrankbreite oder -tiefe mm	Breitenmaße mm				Längenmaße mm			Tiefenmaße mm				
	B1	B2	B3	B4	L1	L2	L3	T1	T2	T3	T4	T5
300	264	235	175	111	160	109	157	264	235	175	111	225
400	364	335	275	211	260	209	257	364	335	275	211	325
500	464	435	375	311	360	309	357	464	435	375	311	425
600	564	535	475	411	460	409	457	564	535	475	411	525
800	764	735	675	611	660	609	657	764	735	675	611	725
850	814	785	725	661	710	659	707	-	-	-	-	775
1000	964	935	875	811	860	809	857	964	935	875	811	925
1100	1064	1035	975	911	960	909	957	-	-	-	-	1025
1200	1164	1135	1075	1011	1060	1009	1057	1164	1135	1075	1011	1125
1600	1564	1535	1475	1411	1460	1409	1457	-	-	-	-	1525
1800	1764	1735	1675	1611	1660	1609	1657	-	-	-	-	1725