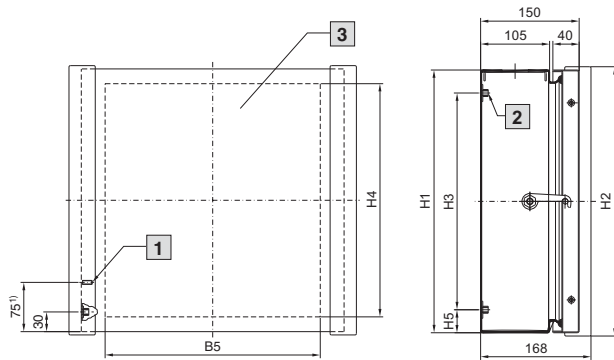
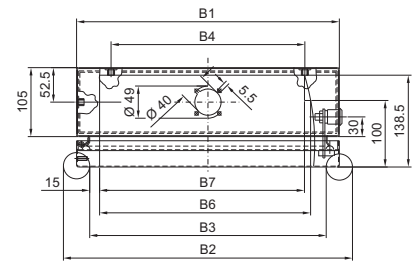


Command panel housings with door



- 1 Welded nuts
M6 x 15
- 2 Welded nuts
M8 x 30
- 3 Max. cut-out B5 x H4



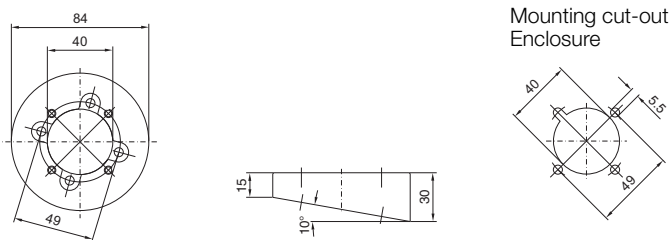
1) Door

Model No. CP	6535.010	6536.010	6538.010	6539.010
Width (B1) mm	300	400	400	600
Height (H1) mm	300	300	400	400
Depth (T1) mm	150	150	150	150
B2 = Enclosure width with handle strips	340	440	440	640
B3 = Clearance opening, front	260	360	360	560
B4 = Spacing of mounting plate attachment	215	295	295	510
B5 = Max. front cut-out, width	225	325	325	525
B6 = Hinged width for depth 100 mm	220	320	320	520
B7 = Hinged width for depth 118 mm	206	310	310	510
H2 = Enclosure height with handle strips	310	310	410	410
H3 = Spacing of mounting plate attachment	250	250	330	330
H4 = Max. front cut-out, height	255	255	355	355
H5 = Distance from base – mounting plate attachment	25	25	35	35

Support arm system CP 40, stainless steel

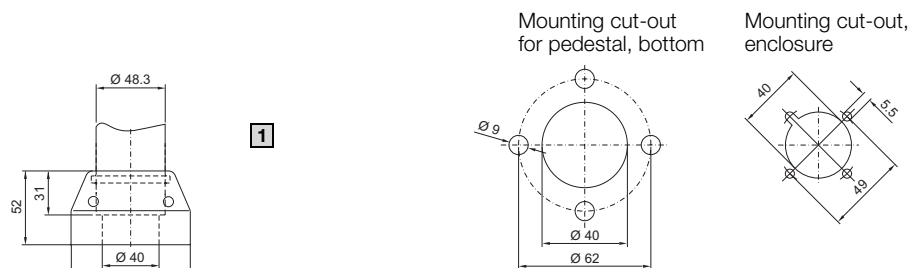
Tilting adaptor 10° CP 40, stainless steel

CP 6664.100



Mounting bracket CP 40, stainless steel

CP 6664.500



1 Clamping screw

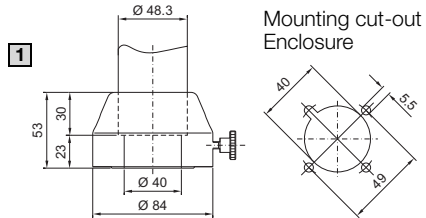
Enclosures

Stainless steel

Support arm system CP 40, stainless steel

Coupling CP 40, stainless steel

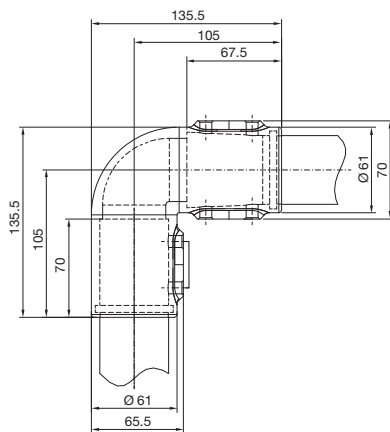
CP 6664.000



1 Clamping screw

Angle piece 90° CP 40, stainless steel

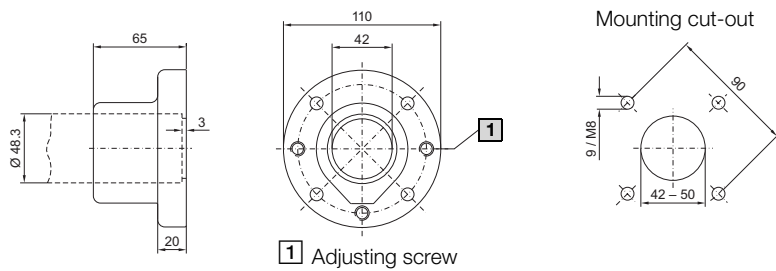
CP 6664.300



- 1 Locking screw
- 2 Adjusting screw

Wall/base mounting bracket, rigid, CP 40, stainless steel

CP 6663.000

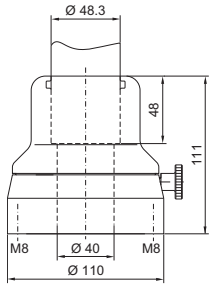


1 Adjusting screw

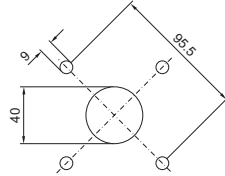
Support arm system CP 40, stainless steel

Base mounting bracket, swivel, CP 40, stainless steel

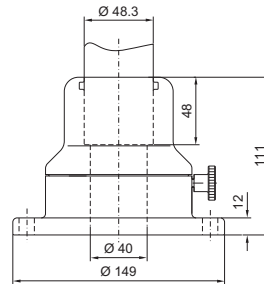
Rear attachment CP 6663.500



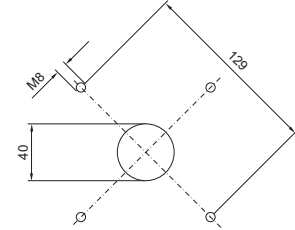
Mounting cut-out



Front attachment CP 6663.400

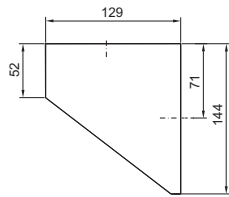


Mounting cut-out

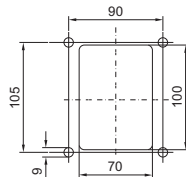


Wall console CP 40, stainless steel

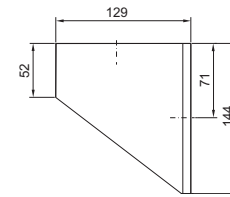
Rear attachment CP 6665.000



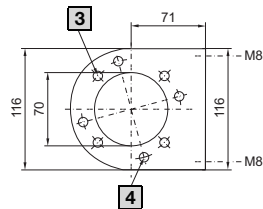
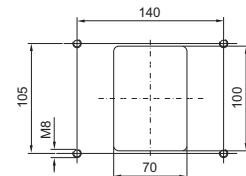
Mounting cut-out



Front attachment CP 6665.500



Mounting cut-out



3 Hole for CP 6663.000

4 Hole for CP 6663.500

