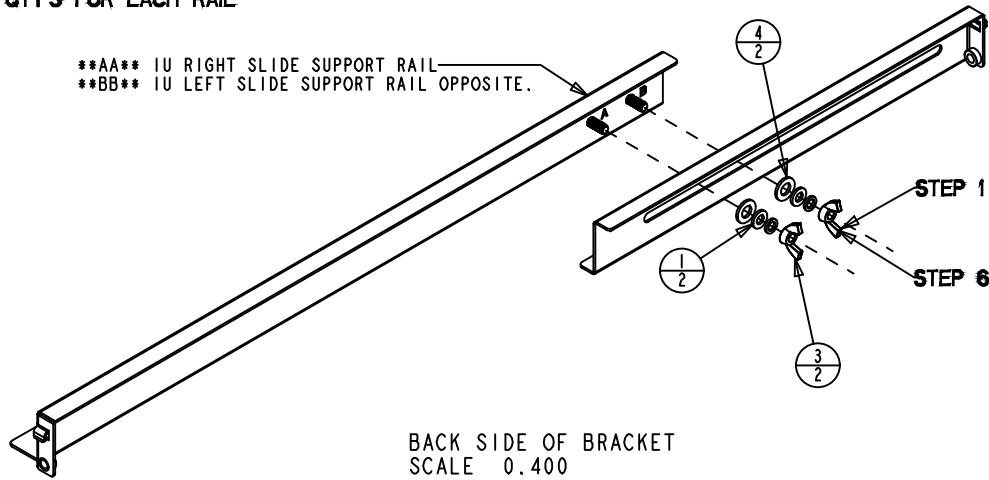


**0083118 HARDWARE KIT CONTENTS ( ITEM CC )**

ITEM	QTY	PART NO	DWG NO	DESCRIPTION
1	2	0200004	N/A	6.4 WASHER FLAT (DIN 125)
2	2	0017455	N/A	WASHER 1/4" SPLIT LOCK
3	2	0015016	D0015016	M6 WING NUT
4	2	0200003	N/A	8.4 WASHER FLAT (DIN 125)
5	2	0205190	N/A	WASHER, 6.5 POLY.
6	2	0205378	N/A	M6 X 16 PHIL PAN HD SCREW

**QTY'S FOR EACH RAIL**

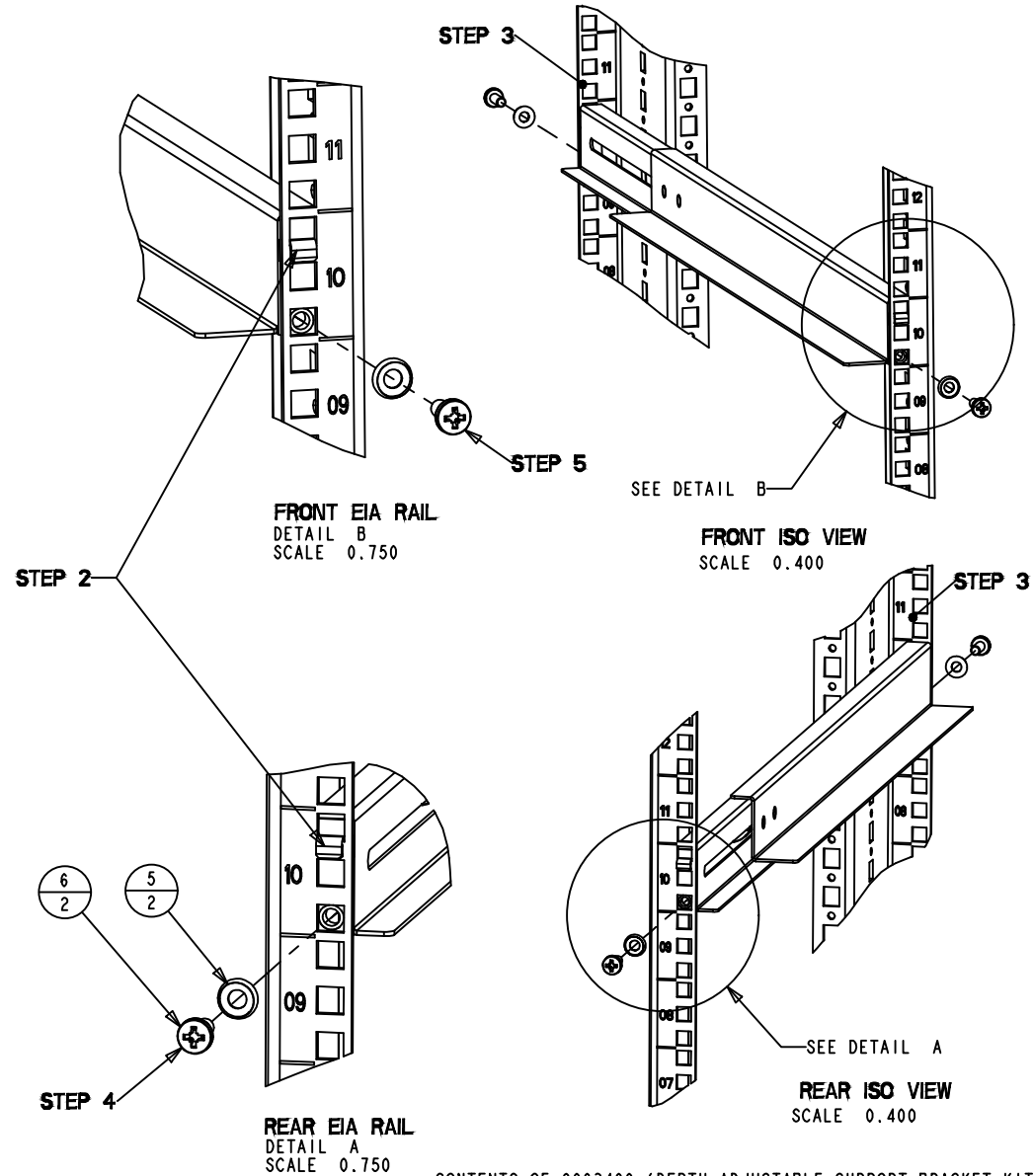
\*\*\*AA\*\* IU RIGHT SLIDE SUPPORT RAIL  
 \*\*\*BB\*\* IU LEFT SLIDE SUPPORT RAIL OPPOSITE.



**RACKMOUNT INSTALLATION INSTRUCTIONS:**

STEPS	ACTION REQUIRED
STEP 1	LOOSEN WING NUT TO ALLOW FREE DEPTH ADJUSTMENT
STEP 2	EXTEND SUPPORT BRACKET TO ENGAGE FRONT AND REAR TAB ON DESIRED SQUARE (*U* SPACE )
STEP 3	BUTT SUPPORT BRACKET MEMBER AGAINST THE BACK OF THE FRONT AND REAR EIA RAILS, ALIGN HOLES WITH DESIRED SQUARES. PUSH DOWN TO LOCK TAB ON EIA RAIL.
STEP 4	INSTALL M6 SCREW WITH POLY WASHER ON REAR EIA RAIL. TORQUE: 1.0 N-m (8.85 in-lbs)
STEP 5	INSTALL M6 SCREW WITH POLY WASHER ON FRONT EIA RAIL. TORQUE: 1.0 N-m (8.85 in-lbs.)
STEP 6	TIGHTEN WINGNUTS FIRMLY

NOTE: REPEAT STEPS FOR OPPOSITE RAIL



**CONTENTS OF 9963499 (DEPTH ADJUSTABLE SUPPORT BRACKET KIT)**

ITEM	QTY	PART NO	DWG NO	DESCRIPTION
AA	1	0078265	D0078265	IU RIGHT SLIDE SUPPORT BRACKET
BB	1	0078298	D0078298	IU LEFT SLIDE SUPPORT BRACKET
CC*	1	0083118	N/A	LOOSE HARDWARE KIT
DD	1	0083119	D0083119	INSTALLATION STEPS FLYER

\* SEE TABLE OF CONTENTS TOP LEFT CORNER