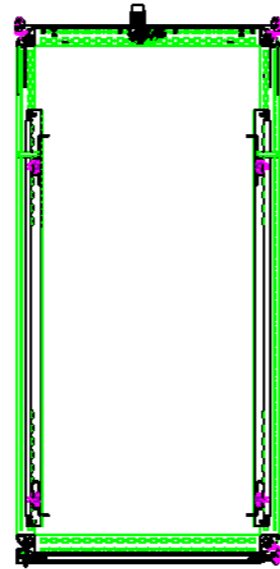
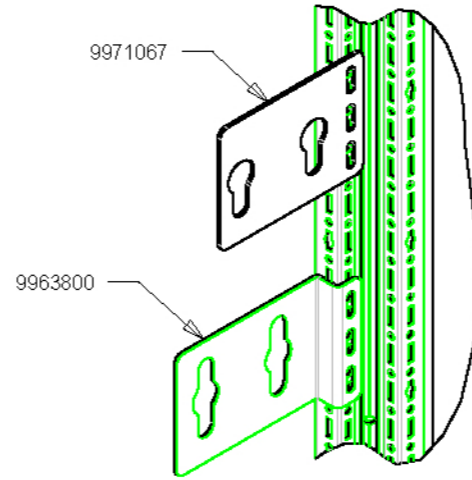


FRONT ISO VIEW  
SCALE 0.080

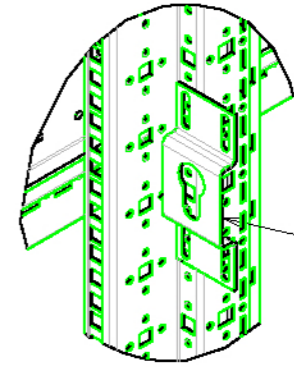
SEE DETAIL A



SECTION B-B



DETAIL A  
SCALE 0.375

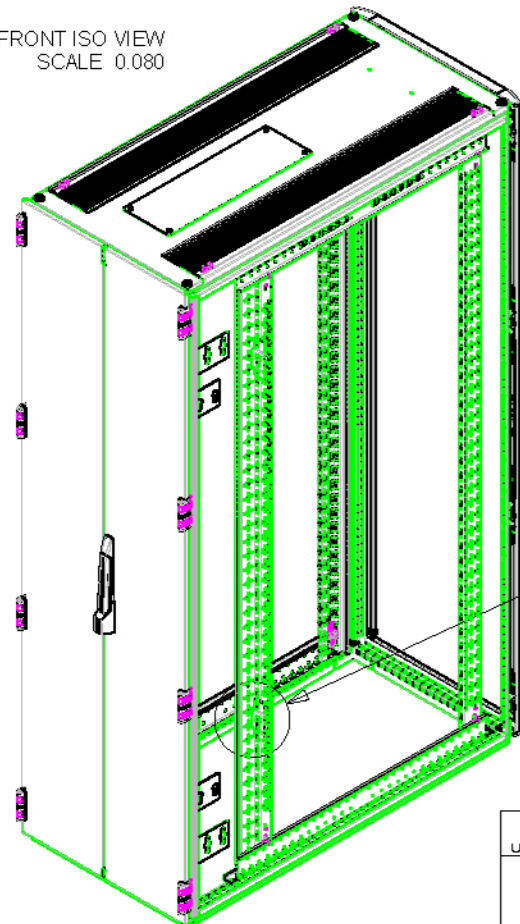


DETAIL B  
SCALE 0.375

INSTALLATION STEPS:

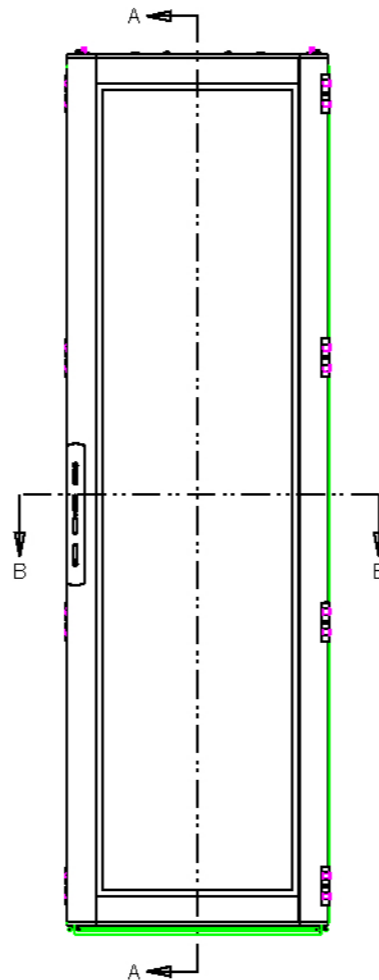
1. FOR 9971067 AND 9963800: INSTALL PDU MOUNTING BRACKET TO THE REAR VERTICAL FRAME MEMBER USING SUPPLIED HARDWARE.
2. FOR 9978522: INSTALL PDU MOUNTING BRACKET TO THE REAR VERTICAL EIA RAIL USING SUPPLIED HARDWARE.

NOTE:  
BRACKETS CAN BE INSTALLED  
AT ANY LOCATION ALONG THE  
VERTICAL FRAME MEMBER.



REAR ISO VIEW  
SCALE 0.080

SEE DETAIL B



SECTION A-A

TOLERANCES UNLESS OTHERWISE SPECIFIED	
0.0	±0.8
0.00	±0.50
0.000	±0.250
ANGLES	±1.0°
0.00 HOLE DIA.	±0.10
REMOVE ALL BURRS AND SHARP EDGES	
CRITICAL CHARACTERISTICS	
UNLESS SPECIFIED OTHERWISE	
- ALL DIMS ARE IN MM	
- ALL INSIDE BEND RADII ARE	
1-1.5 X MATERIAL THICKNESS	

MATERIAL:	N/A	FINISH:	N/A
REV	00	DATE	2/25/16
	INITIAL RELEASE	BY	RNS
	CHANGE	ECN	355663
		CHK	DER

ISO 1101/ANSI Y14.5	REFERENCE:
DATE	NAME
Feb-25-16	RNS
CHECK	DER
Feb-25-16	DER
DRAWING NUMBER	
S0006352	
REV	
00	
SCALE: 0.090	FORMAT: C
SHEET: 1 OF 1	



**RITTAL Corp.**  
1 Rittal Place  
Urbana, Ohio 43078

ISO 1101/ANSI Y14.5	REFERENCE:
DATE	NAME
Feb-25-16	RNS
CHECK	DER
Feb-25-16	DER
DRAWING NUMBER	
S0006352	
REV	
00	
SCALE: 0.090	FORMAT: C
SHEET: 1 OF 1	

ROHS NOTE: This part must comply with the latest requirements and subsequent changes to the ROHS directive